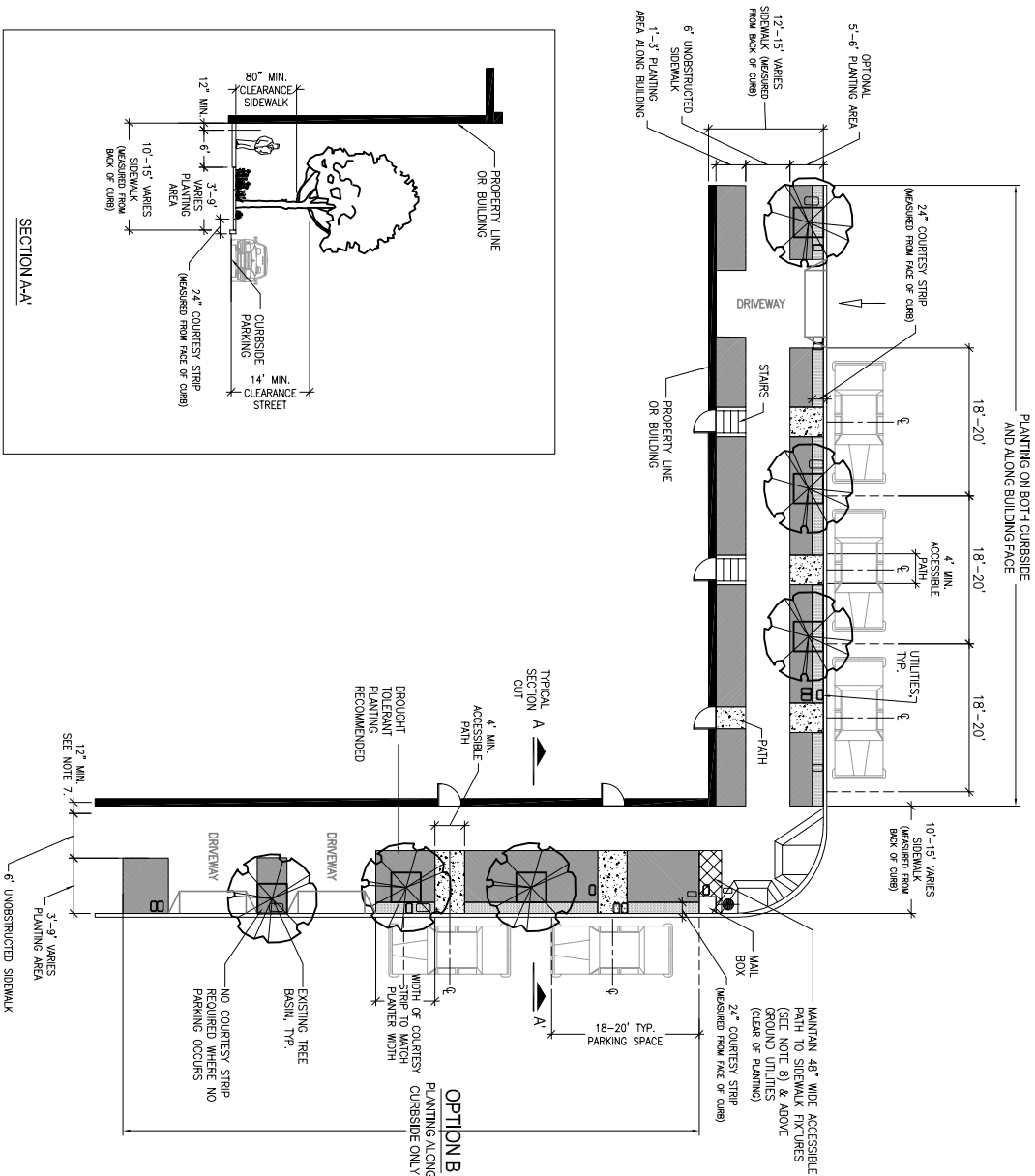
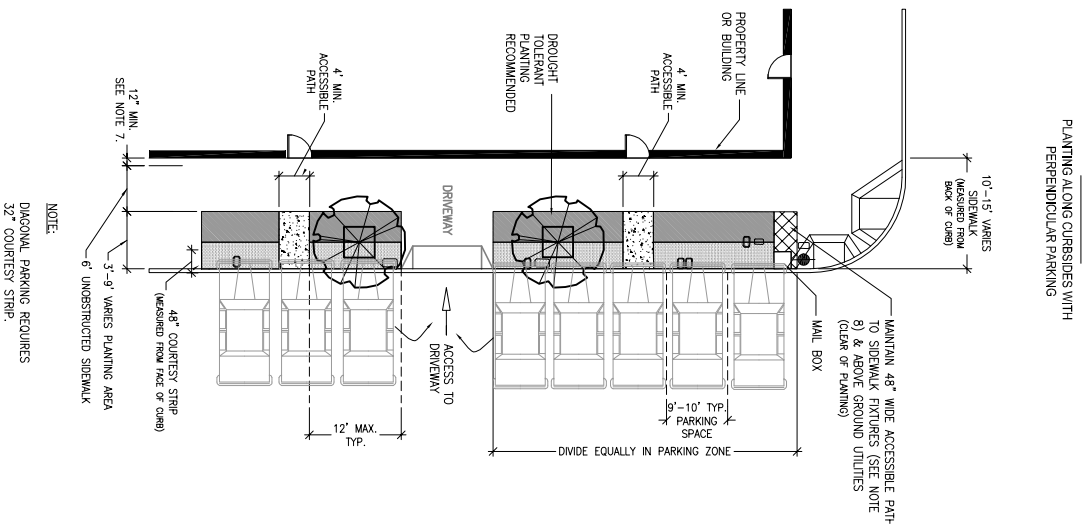


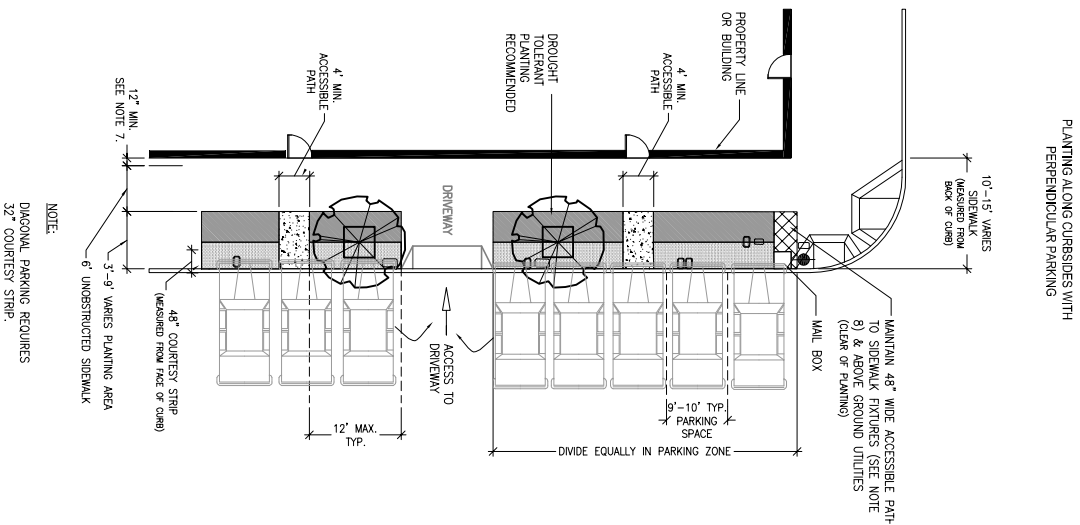
OPTION A



OPTION B



OPTION C



2a Sidewalk Landscaping Design Options

Sidewalks with Curbside Parking

Layout Plan & Sections

- FOR SIDEWALK LANDSCAPING ON SIDEWALKS W/OUT CURBSIDE PARKING PLEASE REFER TO SHEET L-1-1.0
- PROVIDE PATH FROM PARKING SPACE TO SIDEWALK.
- DESIGN INTENT IS TO CREATE CLEAR PATHS FROM CAR DOORS, WHICH MAY INCLUDE DRIVEWAYS (SEE OPTION C PLAN). MEASURE PARKING AREA BETWEEN DRIVEWAYS, RED ZONES, BLUE ZONES & YELLOW ZONES, AND DIVIDE PARKING AREA EQUALLY. CREATE 4 FT. MIN. PATH IN CENTER OF EACH SPACE.
- REFER TO SF DEPARTMENT OF PUBLIC WORKS (DPW) URBAN FORESTRY PERMITS & POLICY'S SIDEWALK LANDSCAPING GUIDELINES FOR MORE DETAILED INFORMATION.
- SEE 2b FOR ENLARGED LAYOUT & SECTIONS.

- SEE 2b FOR ENLARGED LAYOUT & SECTIONS.
- ENSURE TO MAINTAIN 12" MINIMUM CLEAR OR PLANTED AREA ALONG BUILDING OR PROPERTY LINE TO PREVENT PEDESTRIANS FROM HITTING OBSTACLES WITHIN FRONTAGE ZONE.
- SIDEWALK PLANTING SHALL NOT REDUCE THE ACCESSIBILITY OF THE SIDEWALK PATH OF TRAVEL ALONG THE AREA OF WORK IS COMPARED TO THE EXISTING CONDITIONS. FOR EXAMPLE: IF TRAVEL THAT IS LESS THAN OR EQUAL TO 2% IN CROSS SLOPE, AND THE EXISTING PEDESTRIAN THROUGHWAY ZONE MEETS OR EXCEEDS THE ACCESSIBILITY REQUIREMENTS, NEW PLANTINGS SHALL NOT REDUCE THE ACCESSIBILITY THROUGHWAY ZONE. IS PROVIDED.

- MAINTAIN A 48" WIDE ACCESSIBLE PATH TO SIDEWALK FEATURES, SUCH AS PEDESTRIAN PUSHBUTTONS, CENTRALIZED PARKING METERS, MAILBOXES, AND FIRE AND POLICE PULL STATIONS. ALSO NOTE THAT THE ENTIRE WIDTH OF SIDEWALK FRONTING NEWRACKS MUST BE CLEAR OF OBSTRUCTIONS AND A MINIMUM OF 4FT WIDE, BUT NOT NARROWER THAN NEWSRACK/NEWSRACK.

NOTE:
DIAGONAL PARKING REQUIRES 32" COURTESY STRIP.